



# CATALOG 2024

**Derma**  
Series

re**Neo**  
cosmetics



# NEOTHRIX

## TRICHOLOGICAL LINE

### PROFESSIONAL HAIR AND SCALP CARE



was developed by European laboratories in cooperation with leading trichologists and dermatologists



only 5 products for a complete therapeutic solution to the most actual problems of the scalp



the most effective ingredients in a unique form of delivery



the technology of long-term release of polynucleotides and polyphenols

#### COMMON APPLICATION SCHEME

	HAIR LOSS	EXCESSIVE OILINESS OF THE SCALP	DANDRUFF	PREVENTIVE CARE FOR NORMAL HAIR
<b>ANTI-DANDRUFF INTENSE SHAMPOO</b>		Once or twice a week, alternating with...	Intensive course: 7-10 days daily. Maintenance course: 1-2 times a week, alternating with...	
<b>RICH REPAIRING SHAMPOO</b>	daily as needed	daily as needed	daily as needed	daily as needed
<b>RICH REVITALIZING CONDITIONER</b>	obligatory after shampooing	obligatory after shampooing	obligatory after shampooing	obligatory after shampooing
<b>ANTI HAIR LOSS CONCENTRATE</b>	daily overnight	1-2 times a week	1-2 times a week	1-2 times a week
<b>SCALP PEELING</b>	1-2 times a week	2-3 times a week	2-3 times a week	1 time a week



## ANTI HAIR LOSS CONCENTRATE

H330  
100 ml

- ✓ Prevents hair loss and stimulates hair growth
- ✓ Blocks receptors from dihydrotestosterone
- ✓ Enhances microcirculation
- ✓ Strengthens the hair structure



ANTI HAIR LOSS CONCENTRATE enhances the metabolism and trophism of hair follicles. It has a powerful antioxidant effect, prevents the preterm transition of hair into the telogen stage.

Does NOT cause withdrawal syndrome!

Due to the unique complex Procapil decreases dihydrotestosterone production, which makes the concentrate effective even with androgenetic alopecia. Increases the amount of hair in anagen by 21%. Reduces the greasiness of the scalp and blocks the oxidative stress in the tissues.

Polynucleotide and polyphenol slow-release technology Nucleo Tricho-hyal stimulates cell regeneration and promotes new hair growth. Polyquaterniums restore the hair structure, soften, add shine and smoothness to the hair.

Rosemary and olive oil have a strong antioxidant effect. In combination with menthol improve microcirculation, which increases the flow of nutrients to the hair follicle, accelerates hair growth, and slows down the aging process.

The concentrate has a liquid texture, is easily absorbed, gives a feeling of freshness and cooling. Does not greasy the hair roots. In a very convenient spray bottle!!!

### USAGE:

Apply to dry scalp, along the partings. Do not rinse. To prevent hair loss, use 2 times a week. In the course of treatment of alopecia, use daily at night.

### ACTIVE INGREDIENTS:

- Procapil
- Nucleo tricho-hyal
- Polyquaternities
- Rosemary and olive oil

### USE:

- In treatment of alopecia of any etiology
- As a prevention of hair loss
- For oily scalp control
- To improve hair quality



## SCALP PEELING

H331  
100 ml

- ✓ Powerful acid-free keratolytic effect
- ✓ Sebo-regulating effect
- ✓ Does not dry out the hair
- ✓ Nourishes and softens the scalp



SCALP PEELING gel deeply exfoliates horny cells, normalizes the differentiation of keratinocytes and regulates sebum function. The product gently cleanses the scalp, has antiseptic and anti-inflammatory properties and is suitable for the most sensitive skin. The peeling effect is achieved by dissolving sebum fatty acids in peppermint and cinnamon oils.

Additionally, oils enhance microcirculation of the scalp, dilate blood vessels, enhance the trophism of hair follicles, and prevent hair loss.

Urea works as a keratolytic, improves exfoliation processes and eliminates hyperkeratosis. The small molecular weight of urea helps to conduct other ingredients into the lower layers of the skin. This deep cleansing of the scalp does not cause drying and itching. Allantoin and panthenol additionally soften and moisturize the scalp, soothe and stimulate regenerative processes.

The peeling is easy to apply, gel texture is easily distributed on the scalp. Does not cause a burning sensation, and has a slight cooling effect.

### USAGE:

Apply to dry scalp, along the partings. Leave for 2-5 minutes, rinse and shampoo twice. For the prevention of hyperkeratosis, use 1 time per week. In the course of treatment of pathologies of the scalp and hair, can be used 2-3 times a week.

### ACTIVE INGREDIENTS

- Peppermint oil
- Cinnamon oil
- Chamomile flower extract
- Urea
- Allantoin
- Panthenol (vitamin B5)

### USE:

- For elimination of hyperkeratosis
- For normalization of sebaceous glands
- In a complex treatment of alopecia in different genesis
- For prophylactic deep head skin cleansing



## RICH REPAIRING SHAMPOO

H332  
200 ml

- ✓ Careful removal of dirt
- ✓ Restoration of hair structure
- ✓ Scalp nourishment
- ✓ Suitable for frequent washing

RICH REPAIRING SHAMPOO provides external and deep cleansing of hair. In addition, the product helps to get rid of styling products and excessive sebum, keeping hair shiny, healthy, and strong.

Japanese camellia oil nourishes the skin and hair shaft, fatty acids (omega-6, omega-9) add shine to the hair and effectively retain moisture.

Pomegranate extract has an astringent, bactericidal, and anti-inflammatory effect. Prevents dandruff and relieves irritation of the scalp. Guar and polyquaterniums restore areas of damaged hair with their positive charges. Hair is not electrified, becomes smooth, does not get tangled, and brushes perfectly.

### 👉 USAGE:

Double wash: apply to the scalp, foam, hold for 3 minutes and rinse, then repeat the procedure. Can be used daily. After application, it is obligatory to use a conditioner.

### 👉 ACTIVE INGREDIENTS

- Japanese camellia oil
- Pomegranate extract
- Guar silk
- Polyquaternities
- Cocamid

### 👉 USE:

- as a daily care
- in alternation with ANTI-DANDRUFF INTENSE SHAMPOO (according to indications)



## ANTI-DANDRUFF INTENSE SHAMPOO

H333  
200 ml

- ✓ Intense antifungal effect
- ✓ Antiseptic and anti-inflammatory effect
- ✓ Oily scalp control

Anti-dandruff intense shampoo with antiseptic action directly blocks all the key links of the pathological process. The cause of dandruff is the growth of fungi due to excessive sebum secretion, which serves as an ideal breeding ground for microorganisms. Starts an inflammatory process, waste products cause skin irritation and itching.

Due to the highly effective fungicide Octopirox and antiseptic components, this shampoo blocks the growth of fungi, yeast, and other microorganisms. Sulfur reduces sebum activity and has a mild keratolytic effect.

The unique Tricho-hyal complex improves oxygenation and cell nutrition, increases metabolic activity, prolonging the life of the hair follicles. Menthol has a calming and cooling effect in the application of the product.

### 👉 USAGE:

Double wash: apply to the scalp, foam, hold for 3 minutes and rinse, then repeat the procedure. The course of treatment is prescribed by the doctor individually. In preventive care use no more than twice a week.

### 👉 ACTIVE INGREDIENTS

- Octopirox
- Dehydroacetic acid
- Sulfur
- Tricho-hyal

### 👉 USE:

- As a dandruff treatment
- In case of seborrheic dermatitis
- In case of excessive oiliness of the scalp



## RICH REVITALIZING CONDITIONER

H334  
200 ml

- ✓ Restoration of hair structure
- ✓ Antistatic effect
- ✓ Does not weigh hair down

RICH REVITALIZING CONDITIONER improves the quality of hair, gives it smoothness and healthy shine. It does not weigh hair down, does not make the scalp greasy, and is suitable for all hair types. Due to hydrolyzed keratin, it fills the voids in the damaged shaft, moisturizes, and gives elasticity.

The conditioner has an antistatic effect, restoring the negatively charged surface of damaged hair. Simplifies combing and prevents tangling.

The conditioner is an excellent antiseptic, as it contains dehydroacetic acid, which blocks the growth of fungi immediately after the first use. Tocopherol enhances regeneration, prevents hair breakage, and provides antioxidant protection.

### 👉 USAGE:

Apply to clean wet hair with massaging movements. Then rinse the hair well with water. Do not apply to the scalp. Suitable for daily use.

## PROCEDURE PROTOCOL IN THE TRICHOLOGIST'S CLINIC

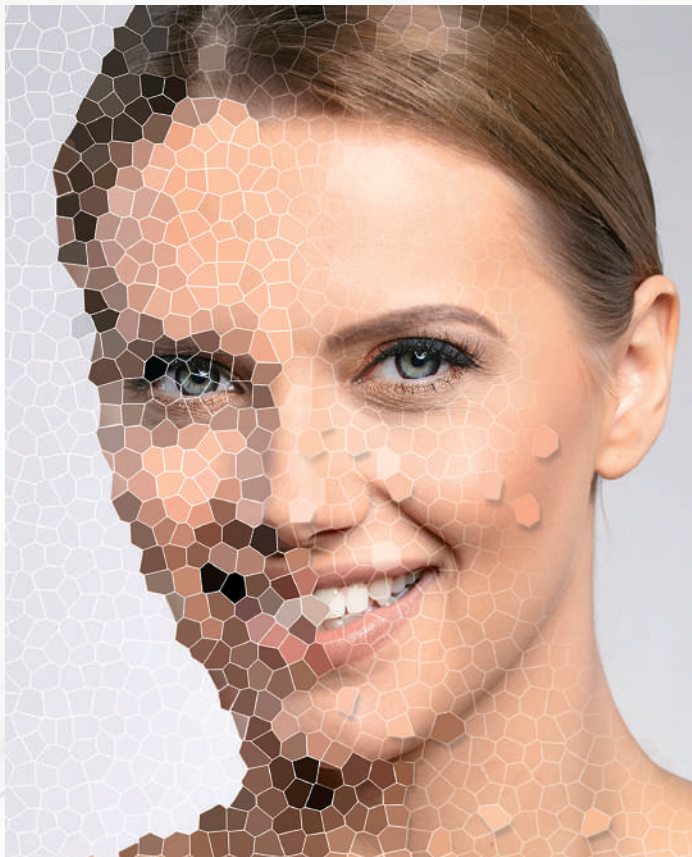
1	Performing a trichoscopy
2	SCALP PEELING Apply to dry scalp, along the hairline for 2-5 minutes, rinse off
3	RICH REPAIRING SHAMPOO - a double wash
4	RICH REVITALIZING CONDITIONER - Apply to damp hair, leave on for 3-5 minutes
5	Hair drying
6	You can repeat the trichoscopy if you wish, so that the client can see the great result immediately after the peeling.
7	Mesotherapy (vascular stage + cocktail with 5-alpha reductase blockers, vasodilators, vitamins, macroelements and microelements) / PRP treatment
8	Application of ANTI HAIR LOSS CONCENTRATE. The perfect opportunity to sell this product in home care!

### 🧪 ACTIVE INGREDIENTS

- Hydrolyzed keratin
- Dehydroacetic acid
- Begentrimonium chloride
- Vitamin E (tocopherol)

### ✅ USE:

- In care for all hair types
- For antistatic effect
- For moisturizing and restoring hair
- As a mask in a spa treatment



# PEEL – EXPERT

## PEEL CARE

### UNIVERSAL PEELING PROTOCOL

#### General recommendations:

- ✓ Be sure to prepare the skin for peeling with a pre-peeling treatment.
- ✓ The exposure time of the acid solution in the first treatment should be no longer than 3 minutes.
- ✓ In subsequent treatments, it is recommended to increase the exposure time gradually up to a maximum time of 7 minutes.
- ✓ The intensity in gel textures is primarily controlled by exposure time, while in liquid textures it is also controlled by the number of coats.

1	<p><b>CLEANSING</b></p> <p>Clean the skin with <b>P171</b> Ultra-Norm Cleansing Gel or <b>P172</b> Comfort Cleansing Mousse. Then degrease the skin and lower the pH with <b>M303</b> Pre-Peel Lotion AHA&amp;BHA for deeper and more even acid penetration.</p> <p>For reactive and sensitive skin, we recommend just toning the skin with <b>P174</b> Calming Tonic.</p>
2	<p><b>PEEL APPLICATION (AS PRESCRIBED)</b></p> <p>Prepare 1.5 ml of peeling from PEEL-EXPERT line – as indicated to the patient. Use a brush to apply the product evenly over the face. The intensity of the effect is controlled by the exposure time or the number of layers, depending on the skin preparation and the number of treatments in the course. Exposure time for the first use is 3 minutes. In following treatments, you can increase the exposure time up to 10 minutes depending on the condition of the patient's skin. Remove excess acids with wet sponges, then neutralize the acid remains using a cotton pad with <b>M311</b> Neutralizer. The neutralizer's remains should also be removed from the skin surface with wet sponges.</p>
3	<p><b>REVITALIZING MASK</b></p> <p>Apply <b>P135</b> Hydra-Help Mask with gentle massage movements. It will instantly eliminate irritation, restore skin pH and create optimal conditions for cell regeneration. Exposure time is 10-15 min. Do not wash off the remains of the mask, just soak it with a dry napkin.</p>
4	<p><b>SPF-PROTECTION</b></p> <p>At the end of the peel procedure, be sure to use <b>H218</b> Sun-Block Emulsion SPF50.</p>



The most effective combination of concentrated acids and pH



Safe and controlled action



Possibility of combined, individualized peel programs



Universal 4-step protocol for all peel procedures



Leading developments of Spain, Italy and Israel



Beneficial cost of procedure

⌚ Duration: 30 minutes



## PEEL-EXPERT SHINE

M312  
50 ml

- ✓ Peeling without rehabilitation period
- ✓ Complex anti-age effect: intensive lightening, revitalization and lifting
- ✓ Antioxidant cell protection

Combined peeling with a balanced complex of acids. Retinol and resorcinol provide multifunctional anti-age treatment: lightening of age spots of any genesis, aligning skin microrelief, smoothing wrinkles and increasing tissue tension. Additional extracts of plants and fermented oils restore the skin protective function, soften it, provide anti-inflammatory effect and enhance the skin natural radiance.

Due to its balanced composition and comfortable pH the peeling does not require rehabilitation period. When applied it causes only a slight tingling sensation, it is well tolerated even by patients with sensitive skin.

### ✋ USAGE:

It is recommended to use as the second step in PEEL-EXPERT procedure – after the treatment with peeling PEEL-EXPERT LIGHT.

The first exposure time is 5 minutes. With each subsequent session you can increase the exposure time up to 15 minutes. Wash off with water or NEUTRALIZER.

For professional use only.

### 🧪 ACTIVE INGREDIENTS:

- Lactic acid 9%
- Mandelic acid 4%
- Kojic acid 1%
- Glutathione
- Retinol
- Complex of fermented oils
- Licorice root extract

### ✓ USE:

- Hyperpigmentation
- Photoaging
- Age-related changes and fine lines
- Dry and dehydrated skin



## PEEL-EXPERT LIGHT

M304  
50 ml

- ✓ All-season peel with instant result
- ✓ Revitalisation and regeneration of skin
- ✓ Peel with no rehabilitation period
- ✓ For all skin types even for sensitive skin
- ✓ Express care, immediate appearance improvement

Universal combination all-season peel with instant complex result: skin relief is improved, fine lines are smoothed, skin firmness and moisture are increased, skin complexion and appearance are significantly improved. Due to unique formula and comfortable pH (3.3) this peel is absolutely safe and delicate as well as effective. It can be used even for most sensitive skin with couperosis signs. Revitalizing peel ("bridal peel") does not require preparation. Unique acid combination with regenerative components makes post-peel period free of flaking. This peel is recommended as a start for a course of peels.

Almond acid improves skin relief. Glycolic and lactic acids have anti-age action, retain moisture in tissues and make skin complexion lighter. Amino acid arginine and allantoin restore epidermis and NMF skin balance.

### ✋ USAGE:

The peel for sensitive skin has a gel texture and is comfortable in application as it does not run. Consumption for one procedure is 1.5 ml. The first exposure time is 3 minutes. With each subsequent session, you can increase the exposure time up to 10 minutes.

### 🧪 ACTIVE INGREDIENTS:

- Mandelic acid 15%
- Glycolic acid 6%
- Lactic acid 5%
- Salicylic acid 1,5%
- Arginine
- Allantoin

### ✓ USE:

- to prepare skin before more aggressive peels
- to improve microrelief
- to care for dry and sensitive skin
- to care for skin with first signs of ageing
- as an express care with WOW-effect



## PEEL-EXPERT M

M310  
50 ml

- ✓ All-season acid peel
- ✓ Elimination of hyperkeratosis of any kind
- ✓ First peel at the beginning of the course (no preparation needed)
- ✓ Ideal peel even for sensitive skin

All-season acid peel (pH 1.9) with 40% almond acid provides powerful keratolytic action. It improves skin relief and complexion, makes the skin lighter, performs seboreregulating and anti-inflammatory actions.

Almond acid has a macromolecular structure and performs greatly on a skin surface. It mildly peels dead skin cells and does not penetrate deep epidermis layers. Almond peel is ideal to be used even for reactive sensitive skin with signs of rosacea. It perfectly prepares skin for more aggressive procedures.

Rehabilitation period takes from 3 to 5 days and depends on pre-peel preparation, skin condition and its resources. During this period it is important to use sunscreen and to avoid active insolation. The client will feel a significant improvement in skin condition and will see the aesthetic effect.

### ✋ USAGE:

This peel with a gel texture does not run and is comfortable in use.

Use 1.5 ml in one procedure. Time of application may be extended with every next procedure from 3 up to 7 minutes. This peel needs to be neutralized!

In the course of peels it can be used even in the first procedure for dense skin with vivid pores and couperosis. If the skin has a low regeneration potential, it is recommended to start with M304 Peel-Expert Light, then proceed to M310 Peel-Expert M.

### 🧪 ACTIVE INGREDIENTS:

- Mandelic acid 40%

### ✓ USE:

- Microrelief improvement is needed
- Photo damage
- First ageing signs
- Propensity for rashes
- As a part of complex programs for problem skin correction
- Preparation before more aggressive peels



## NEUTRALIZER

M311  
200 ml

- ✓ Quick neutralization of AHA and BHA
- ✓ Additional soothing action for irritated skin

This lotion neutralizes activity of AHA and BHA. It restores normal skin pH after aggressive influence of chemical peel. Allantoin provides quick skin restoration and regeneration after damaging action of acids.

In Derma Series procedure protocol after the exposure of the peeling it is necessary to remove excess acid with a wet sponge, and then use a neutralizer to completely stop the acid action on the skin surface. For sensitive skin the neutralization should be done without contact with water.

### ✋ USAGE:

After the exposure of the peel, remove the excess acid with a wet sponge, and then use a neutralizer to completely stop the acid action on the skin surface. Tonicify the skin.

### 🧪 ACTIVE INGREDIENTS:

- Allantoin
- Sodium carbonate

### ✓ USE:

- To neutralize acids during chemical peel procedure.



# CONDUCTIVE SERUMS

9



## CONDUCTIVE LIFT-BOOSTER

M126  
30 ml



- ✓ Instant lifting WOW-effect
- ✓ Skin's own collagen and elastin synthesis stimulation
- ✓ Improvement of skin turgor and elasticity
- ✓ Produced in Germany

Highly active bipolar concentrate is specially designed to be used in a hardware cosmetology by professionals. The product can be used as a gel for iontophoresis, ultrasound and electroporation. This rich complex restores major structural elements of extracellular skin matrix that is responsible for skin elasticity and resilience. It produces a vivid WOW-effect already after the first procedure, that is why it can be used as self-sufficient express care.

Action of a unique TRIACTIGEN complex focus on collagen and elastin synthesis and improvement of tissue turgor. Hydrolyzed Collagen and Elastin work as a substrate for production of skin's own collagen and elastin; provide skin hydration.

This lifting serum for devices can be used as a self-sufficient product in a regular home care, especially to support and prolong effects of a hardware treatment. Aqueous base with a gel texture provides a long-lasting manipula slide and is used without any additional conductive gels. Minimal usage of one procedure is 2 ml.

1. Boosters are specially developed products for use with ultrasound, iontophoresis and electroporation machines.

2. Boosters have a water base and gel texture, which ensures long-term sliding of the maniple and does not require additional gel guides.

3. Boosters can be prescribed for regular home care in order to support and maintain the effect after a hardware procedure.



### ACTIVE INGREDIENTS:

- Hydroviton24
- Triactigen
- Hydrolyzed elastin and collagen



### USE:

- As express care for instant results
- For aging skin correction as a part of other Derma Series procedures
- To increase tissue turgor
- For sagging, atonic and dehydrated skin



## CONDUCTIVE AQUA-BOOSTER

M127  
30 ml

- ✓ 3 powerful hydrating agents
- ✓ Moisture depositing principle
- ✓ Instant and prolonged skin hydration
- ✓ Produced in Germany

Highly active bipolar concentrate is specially designed to be used in a hardware cosmetology by professionals. The product can be used as a gel for iontophoresis, ultrasound and electroporation. This moisturizing serum for devices provides intense skin hydration and smoothes small wrinkles that appear due to skin dryness. The product is in an ionised form with a high bioavailability. It significantly improves the effect of physiotherapy.

Aquapront and Hydroviton24 complexes as well as a hyaluronic acid guarantee quick and long-lasting skin moisturization. It instantly removes dryness, makes skin hydration last for a long time and improves microrelief. The most vivid effect is on skin with a fine wrinkled type of aging.

This serum for devices can be used as a main 4th or an additional 6th step of Derma Series procedure protocol. It can also be used as a self-sufficient product in regular home care, especially to support and prolong effects of a hardware treatment. Aqueous base with a gel texture provides a long-lasting manipula slide and is used without any additional conductive gels. Minimal usage of one procedure is 2 ml.

### ACTIVE INGREDIENTS:

- Aquapront
- Hydroviton24

### USE:

- After first signs of skin dehydration
- In anti-age protocols, especially in care for aging skin with fine wrinkles
- After aggressive cosmetological treatments
- For tissue rehydration



## CONDUCTIVE CALM-BOOSTER

M128  
30 ml

- ✓ For hypersensitive skin with couperose and rosacea
- ✓ Firmness improvement of vascular walls of capillaries
- ✓ Decrease of skin inflammatory reaction
- ✓ Produced in Germany

Highly active negatively charged concentrate is specially designed to be used in hardware cosmetology by professionals. It is perfect for iontophoresis, ultrasound and electroporation. It is ideal for sensitive skin prone to reactivity and skin with couperose and rosacea signs.

This serum for sensitive skin for devices contains liquorice root and horse chestnut extracts – active ingredients that make capillary walls firmer and stimulate injury recovery. Panthenol and bisabolol produce calming, hydrating effects and decrease inflammation manifestations.

The serum can be used as a self-sufficient product in regular home care, especially to support and prolong effects of hardware treatment. It is also recommended as an additional product on the 6th stage of Derma Series procedure protocols. The product can be used without any conductive gels. Minimal usage of one procedure is 2 ml.

### ACTIVE INGREDIENTS:

- Alpha-bisabolol
- Vitamin B5 (pantenol)
- Honeycatan extract
- Root of mallet extract

### USE:

- For sensitive skin prone to couperose
- To decrease manifestations of irritation of hypersensitive skin
- In case of allergic and vivid inflammatory reactions on skin

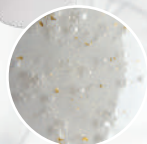


## LUXE-AGE GOLD FILLING SERUM

P105 – 50 ml

H145 – 30 ml

- ✓ Increasing the elasticity and firmness of the skin
- ✓ Lifting effect and smoothing of fine wrinkles
- ✓ Maintains skin moisturized
- ✓ Produced in France



Luxury serum for restoring skin turgor, lifting, and correcting visible age-related changes. Maximum impact on the processes that slow down the aging of skin cells. The serum helps to strengthen the dermis, smooth out wrinkles, perfectly moisturize the skin. The luxury of gold combined with the activity of biotechnological components gives the best effect! The skin becomes smooth, silky, and elastic. The texture of the serum turns the moment of care into an absolute pleasure! The serum has a light gel texture with gold flakes. It is easily distributed and absorbed.

### 👉 USAGE:

Recommended for use in the LUXE-AGE procedure before applying the active mask. In home care to achieve the maximum effect it is recommended to apply the serum in the evening on cleansed skin, and use Luxe-age Diamond peptide serum in the morning.



## BRIGHTENING ALPAFLOR SERUM

P116 – 50 ml

H118 – 30 ml

- ✓ Correction of hyperpigmentation and anti-aging effect
- ✓ Evening and brightening of skin tone
- ✓ Filling wrinkles and moisturizing the skin
- ✓ Anti-inflammatory action
- ✓ Made in France



Concentrate for brightening and even skin toning based on an innovative biotechnological complex ALPAFLOR® GIGAWHITE. The synergy of carefully selected plant extracts has given them maximum activity to brighten skin tone, correct hyperpigmentation and protect skin from free radical damage. Thanks to the combination of a phytocomplex with hyaluronic acid and lecithin, the serum affects all links of the photoaging process, instantly fills wrinkles and moisturizes the skin in the long run, which contributes to the restoration of homeostasis in the epidermis and in the intercellular space of the dermis. Contains a record amount of flavonoids and phytosterols, which have a softening and stimulating effect on the skin, they help retain moisture and heal the epidermis. The serum has anti-inflammatory properties, it improves microcirculation and strengthens the vascular wall.

### 👉 USAGE:

Apply to cleansed face and neck skin under a mask or finishing cream. The brightening serum has a light fluid texture, a pleasant neutral aroma, gets instantly absorbed, and does not leave a stickiness on the surface of the skin.

### 🧪 ACTIVE INGREDIENTS:

- Homeostatine M.S.
- Gold hydrosol
- Hyaluronic acid

### ✔ USE:

- In complex care for mature skin
- For skin with signs of atony and dryness
- In combination with Luxe-age Diamond peptide serum

### 🧪 ACTIVE INGREDIENTS:

- Alpaflor® gigawhite (5%)
- Lecithin
- Hyaluronic acid

### ✔ USE:

- in brightening therapy
- for correction and prevention of signs of photoaging
- in anti-age therapy protocols

## HPR SERUM

with Granactive Retinoid 2%

P223 – 30 ml

H224 – 15 ml

- ✓ Powerful skin cell renewal
- ✓ Regulation of keratinization on all levels
- ✓ Correction of acne-like rashes
- ✓ Produced in Switzerland



HPR SERUM with peptides and retinoid of the latest generation specifically affects the nuclear receptors of skin cells, stimulates renewal, regeneration, and synthesis of new structures of the extracellular matrix. Serum helps to even out the microrelief and skin tone, narrows pores, normalizes keratinization processes, and reduce rashes. Also restores skin elasticity and hydration, significantly improves its color, and smoothes fine wrinkles. It contains two unique components. The latest generation HPR retinoid is the most effective for skin renewal among retinol derivatives and at the same time it is absolutely safe, with a very low irritation potential. Renovage peptide complex promotes skin thickening and restoration of its turgor by stabilizing telomeres in the DNA cells. The complex of sweet almond and grape seed oils saturates the skin with antioxidants, preventing inflammatory and oxidative processes in tissues.

The serum has a light oily texture and is perfectly absorbed without creating a film on the skin surface.

### ✋ USAGE:

Apply to cleansed dry skin only at night. After 10-15 minutes apply the cream! It is recommended to gradually increase the dose depending on the sensitivity of the skin and the purpose of using the serum, the course is adjusted individually. During the first 10 days, we recommend using the serum every 3 days. From the 11th to the 20th day, use it every second day, and from the 21st day, we recommend using it every day. The full course of treatment is 60 days.

### 🧪 ACTIVE INGREDIENTS:

- Granactive retinoid 2%
- Renovage
- Sweet almond oil
- Grape seed oil

### ✓ USE:

- For correction and prevention of age-related changes
- In the complex treatment of acne-like rashes
- For lightening of hyperpigmentation of any genesis

## 3D-LIFT SERUM

P185 – 50 ml

H186 – 30 ml

- ✓ Peptide complex for atonic skin
- ✓ Lifting and hydration
- ✓ Record 15% increase in elastin synthesis
- ✓ Produced in Germany



Lifting anti-age serum for effective aging skincare. Highly active ingredients influence all skin levels and stimulate synthesis of vital extracellular matrix components – elastin, collagen, and natural hyaluronic acid. Skin elasticity, firmness, hydration level, and tone get a vivid and long-lasting effect.

This peptide rejuvenation serum includes (the) peptide complex IDEALIFT that activates synthesis of elastin. Biotech polysaccharide complex PENTAVITIN in combination with hyaluronic acid of various molecular weights smooth out wrinkles, provide deep hydration and create an effect of super fullness.

The serum has a light gel texture and is quickly absorbed. It is used in a course of anti-age care, as well as in supportive everyday home care with duration up to two months.

### ✋ USAGE:

Apply to cleansed face and neck skin under a mask or finishing cream. For maximum effect, it is recommended to apply the course of 2 months.

### 🧪 ACTIVE INGREDIENTS:

- Idealift
- Pentavitin
- Hyaluronic acid

### ✓ USE:

- In case of gravitational ptosis
- In case of loss of turgor and tone
- For age-related wrinkles
- For fragile dehydrated mature skin
- To prevent skin aging changes

## LOCAL SOS-SOLUTION



P213 – 100 ml

H214 – 15 ml

- ✓ Intense drying and bactericidal action
- ✓ Resorption effect for infiltrates
- ✓ Tissue regeneration
- ✓ Produced in Israel

Irreplaceable product in care for problem skin with rashes! It performs a double impact on inflammations: dissolves infiltrates and dries out pimples. This SOS-product improves skin regeneration and skin microcirculation. It guarantees a highly effective action in every stage of the inflammation process!

High concentrated sulfur and zinc act perfectly against subcutaneous tick – demodex. Niacinamide and rosemary extract improve regeneration and microcirculation that prevent the appearance of congestive post-inflammatory spots – post-acne.

Needs to be well shaken before application! It is perfect to be used in professional care after extraction, as well as in home care in the evening, according to professional recommendations.

### ✋ USAGE:

After performing a mechanical or hardware cleansing, apply the product to the entire face, enhance the effect with a darsonvalization procedure. Then it is possible to perform a Jacques massage.

In home care – apply at night dotting inflammatory elements.

### 🧪 ACTIVE INGREDIENTS:

- Vitamin B3 (niacinamide)
- Camphora
- Zinc oxide
- Sulfur
- Rosmarine extract

### ✓ USE:

- as a local solution for inflammation areas
- after a mechanical peel
- to dry up excessively oily skin with acne



## TOTAL OIL-CONTROL SERUM

P176 - 50 ml

H177 - 30 ml

- ✓ Complex action on 4 main problems of seborregulation
- ✓ Restoration of natural bacterial flora balance
- ✓ Additional hydration for extra dry skin
- ✓ Produced in Germany

High concentrated serum for oily skin has a complex effect on normalizing sebobalance. It decreases skin sebum production, eliminates oily shine and reduces hyperkeratosis. The serum is perfect for problem skin. It has antibacterial and anti-inflammatory effects. The major component of the serum is an active complex AC.NET based on oleanolic and nordihydroguaiaretic acids (NDGA) in their maximum effective concentration (3%) that influence complex restoration of skin seborregulation. Salicylic acid also performs keratolytic and bacteriostatic actions. Due to hydrative qualities of sea algae serum protects the skin from dehydration.

This serum has a light gel texture. It is recommended for professional care and supportive everyday home care.

### ✋ USAGE:

Apply to cleansed skin before applying a sebo-regulating mask, or under the finishing cream.

### 🧪 ACTIVE INGREDIENTS:

- Ac.net
- Aloe vera
- Salicylic acid
- Red algae hondrus cryspus extract

### ✓ USE:

- for oily, combination and problem skin
- as a supportive product to care for skin with acne
- for normal skin during summer period
- to prevent rashes and inflammation for teen skin care



## RENEWING ENZYM AHA SERUM

P107 – 50 ml

H108 – 30 ml

- ✓ Epidermis regeneration
- ✓ Gentle exfoliation
- ✓ Effective pre-and-post peeling care
- ✓ Produced in France



Serum for gentle skin renewal. The combination of enzyme and acid peeling effect provides a thorough exfoliation of keratinized cells of the epidermis and helps to restore a balanced process of keratinization and regenerative functions of the skin. Activation of keratinocytes activity increases the synthesis of cytokines which influence the production of the structural elements of the dermis. Active hydration normalizes the level of hydration of the epidermis and prevents the violation of desquamation. The serum significantly improves skin relief and increases the activity and bioavailability of the other components of care.

### 👉 USAGE:

At the stage of regenerative activation in the procedure the serum can be used as an enhancer (apply for 3-5 minutes in a thin layer without subsequent washing off), or to provide a light peeling effect (apply in a thick layer for 5-7 minutes, then rinse off with water).

Apply to cleansed skin before applying a mask or cream. Can be used in professional procedures as well as in daily evening home care.



## VITA-ACTIVE PEPTIDE SERUM

P219 – 50 ml

H220 – 30 ml

- ✓ 11 active ingredients
- ✓ Restoration of a skin lipid barrier
- ✓ Complex anti-age effect
- ✓ Produced in Spain



Multifunctional serum with a fluid texture and light fragrance is easily and quickly absorbed by skin leaving no stickiness. It is suitable for all skin types, especially for skin prone to dryness and lack of tone. This nutrition vitamin serum prevents dehydration, makes complexion more even and lighter, removes fine lines.

The fluid has rich and complex composition. Vitamins A, B, C and E promote ceramides and oily acids synthesis for a restoration of skin barrier functions; perform antioxidant protection, tighten blood vessels walls and take part in synthesis of multiple structure skin components. Five growth factors in its composition regulate proliferation and differentiation of skin cells. Acetyl hexapeptide 8 relaxes mimic muscles and prevents appearance of mimic lines.

This peptide serum is used in a course up to two months in professional care as well as in home care.

### 👉 USAGE:

The serum is used for a course of up to two months in both salon and home care.

### 🧪 ACTIVE INGREDIENTS:

- Glycolic acid (5%)
- Keratoline
- Raspberry extract

### 👉 USE:

- As a regenerative activation step in any procedure
- As a preparation for a professional peel or mesotherapy treatment
- For a refreshing therapeutic effect on hypersensitive skin
- As a supportive post-peeling care

### 🧪 ACTIVE INGREDIENTS:

- Acetyl hexapeptide 8
- Growth factors
- Vitamins A, B, C, E

### 👉 USE:

- for skin prone to dryness and moisture loss
- in complex mature skin care
- for combination skin with post-acne
- for atonic skin

## ANTI-RED CALMING SERUM

P178 – 50 ml  
H179 – 30 ml



- ✓ SOS-serum for redness removal
- ✓ Instant calming effect
- ✓ Decreasing of skin sensitivity to environmental irritants
- ✓ Deep hydration
- ✓ Produced in Germany

Serum for sensitive skin with a strong anti-inflammatory complex with instant action. This serum is created for irritated skin prone to all kinds of rashes and allergic reactions. It removes itching and erythema.

Instantly soothes irritated skin and strengthens skin protective barrier. This serum-fluid performs regenerating and moisturising action significantly lowering skin sensitivity. As a result, epidermis is calm and stable even under intensive environmental influence. Silky skin is well hydrated, and its complexion remains healthy and fresh. The calming serum is an irreplaceable product for professionals as it helps to soothe skin in case of any unpredictable reactions. It can also be used in aggressive procedures.

Patented biotech complexes DEFENSIL and PENTAVITIN improve natural skin barrier functions, prevent allergies and irritations, normalize skin hydrobalance. This product is ideal for the most sensitive skin in professional care as well as in home care.

### 👉 USAGE:

As a course of treatment or on a regular basis, twice a day. Apply to cleansed skin, then use a finishing cream.

### 🧪 ACTIVE INGREDIENTS:

- Pentavitin
- Defensil
- Alpha-bisabolol

### 👉 USE:

- For instant redness removal
- In a daily care for sensitive skin to lower its reactivity
- In case of allergic reactions
- In an aggressive environment

## ANTI-WRINKLE SERUM

P117 – 50 ml  
H170 – 30 ml



- ✓ Effective relaxation of facial muscles
- ✓ Double action: miorelaxation and moisturizing
- ✓ Instant and prolonged effect
- ✓ Produced in France

An effective and safe cosmeceutical method for getting rid of expression lines. A miorelaxant has both instant and prolonged action. Relaxation of expression line muscles leads to smoothing of wrinkles and preservation of skin smoothness. The “smoothing” effect is enhanced by the moisturizing properties of the serum.

### 👉 USAGE:

The serum is recommended to use both totally (in case of network of expression lines to enhance the smoothing and filling effect) and locally (forehead, brow, crows feet).

### 🧪 ACTIVE INGREDIENTS:

- Syn-ake
- Hyaluronic acid

### 👉 USE:

- In the complex care of mature skin
- In case of expression lines
- To correct and fill age-related wrinkles



## SOFT BALANCE CLAY MASK

P189 – 200 ml

H119 – 100 ml

- ✓ Restoration of epidermis lipids
- ✓ Nutrition for ALL skin types including sensitive and oily skin
- ✓ Powerful detox action with a brightening effect
- ✓ No parabens, silicones and mineral oils

Nutritive mask with WOW-effect has perfect cleansing and lightening properties. This instant beauty mask is a powerful detoxifier. It evens skin tone and relief, hydrates and nourishes skin restoring its protective barrier, normalises skin sebum production and unclogs pores. The product can be used as a sos-mask for sensitive skin – it soothes skin, decreases inflammation and skin flaking. This mask contains kaolin that absorbs an excessive skin sebum. Ingredients with a high concentration of organic silicon support skin elasticity and its ability to retain moisture. Cocktail of light oils promotes restoration of skin barrier.

This high plasticity mask can be easily applied without any preliminary preparations. It does not dry up skin at all! It can be easily removed with water 15 minutes after application. This mask is recommended as a part of a professional care as well as a supporting home care product.

### 👉 USAGE:

Apply 6 ml of the mask in an even layer to the face and neck area. Allow the mask to work for 15-20 minutes. Then emulsify with light massaging movements with wet hands. Rinse off the remainder with water and tone it.

### 🧪 ACTIVE INGREDIENTS:

- Avocado oil
- Sweet almond oil
- Kaolin
- Vitamin E (tocopherol)

### ✓ USE:

- to detox dull and tired skin
- to improve microrelief and prevent premature ageing
- in a refreshing express course during change of seasons
- for damaged skin restoration – removal of skin peeling and irritation as an instant beauty mask for all skin types



## SEBO-NORM MASK

P212 – 200 ml

H146 – 100 ml

- ✓ Normalizing action on problem skin
- ✓ Complex sebo regulation
- ✓ Anti-inflammatory and antibacterial effect
- ✓ Ideal mask after cleans

Creamy mask for oily skin based on green clay normalizes problem skin with multifunctional actions including: absorption, sebo regulation, anti-inflammation and soothing. This mask perfectly tightens pores, mattifies skin and speeds up healing. When used regularly it dissolves congestions – post-acne. This is an ideal antibacterial mask to complete cleansing!

Contains sulphur, camphor, azelaic acid and plant extracts that perform complex anti-inflammatory, antioxidant, vasoactive action, and provide demodex prevention.

### 👉 USAGE:

The mask is easily spread on skin, does not dry up, and should be removed with warm water after 15 minutes of application. For a short time might appear prickly feeling during the application. It is recommended to use the mask 1-2 times a week in home care.

### 🧪 ACTIVE INGREDIENTS:

- Azelaic acid
- Green clay (illite)
- Camphora
- Zinc oxide
- Sulfur
- Green tea extract

### ✓ USE:

- for combination, oily skin
- for teen skin to prevent specific complications
- in the course of skin extractions
- in the course of regular care for problem skin with acne
- in home care of problem skin with your beautician recommendations





## HYDRA HELP MASK

P135 – 200 ml

H136 – 100 ml

- ✓ Skin hydrobalance restoration
- ✓ Stimulation of natural moisture retention processes
- ✓ Long-lasting effect of deep skin hydration
- ✓ Reduces irritation, soothes the skin
- ✓ Produced in France

Cream mask has a very light texture and its innovative formula works on the principle of continuous skin hydration and restructuring. It provides total restoration of skin hydro reserves: maintaining osmotic balance in the cells, stimulating hyaluronic acid synthesis, keeping moisture in the epidermis through hygroscopic components, as well as restoring the lipid barrier, creating a protective film to prevent moisture loss.

Plant complex Aquaxyl promotes synthesis of aquaporines (transport proteins) for optimal distribution of moisture in the skin as well as synthesis of ceramides to restore lipidic skin barrier. High molecular hyaluronic acid retains moisture that provides emergency care for dehydrated skin.

This is an ideal mask for sensitive skin that decreases inflammatory reactions and flaking. It is an obligatory element of peel procedure. It instantly soothes the skin, restores its pH, and provides optimal conditions for its regeneration.

### 👤 USAGE:

Moisturizing mask is applied once or twice a week. It is necessary to put the mask in a thick layer on the face and neck area, leave it for 15-20 minutes, then blot the rest with a dry napkin. Do not wash off.

In home care use it as a final night cream 1-2 times a week. For very dry, dehydrated skin use as a course of treatment: daily for 1-4 weeks, then once or twice a week.

### 🧪 ACTIVE INGREDIENTS:

- Aquaxyl
- Hyaluronic acid

### ✓ USE:

- to care for dry and dehydrated skin
- to care for skin with "fine lines" type of aging
- to protect the skin before use of thermo active plaster mask
- to care for hypersensitive skin in peel procedures



## ANTI-WRINKLE MASK

P208

400 g

- ✓ Triple effect on wrinkles: smoothing, filling and lifting
- ✓ Moisturizing and mineralizing of the dermis
- ✓ Immediate effect after the first treatment
- ✓ Botulinum therapy effect prolongation  
Produced in France

Triple effect for the correction of expression lines. Relaxation of mimic muscles leads to smoothing of wrinkles and contributes to preservation of skin smoothness. Botox relaxing effect is achieved due to a synthetic peptide – argireline, which blocks the transmission of nerve and muscle impulses, imitating the action of botulinum toxin.

Filling effect is achieved by increasing the volume of subcutaneous fat due to the content of Dictyopteris brown algae oil. Lifting smoothing effect is enhanced by the Homeostatine™ M.S. complex, which restores homeostasis in the extracellular matrix. Suppresses the activity of metalloproteinases and the synthesis of pro-inflammatory cytokines. Reduces the depth and number of wrinkles, makes the skin firm and elastic. Potentiates lifting effect and moisturizing effect of alginate salt.

### 👤 USAGE:

Mix 90 ml of room temperature water with 30 g of powder. Mix to create a homogeneous mixture. Apply the mask on face using spatula, following the massage lines. After 15 minutes remove the mask from the face as one piece, starting from bottom to top.

### 🧪 ACTIVE INGREDIENTS:

- Alginate
- Argirelin
- Dictyopteris oil
- Homeostatine M.S.

### ✓ USE:

- In case of first signs of expression lines and dry skin
- To prolong the effect of botulinum toxin injections
- In case of the fine-wrinkle type of aging, skin atony or subcutaneous fat deficiency
- In the complex care of the eye area, for elimination of edema and filling of small radial wrinkles.
- Use with caution in the case of ruptures of the lower eyelid
- In combination with bio-polypeptide alginate

## LUXE-AGE PEARLY ALGAE MASK

P106  
400 g

- ✓ Powerful regenerating anti-age effect
- ✓ Moisturizing and mineralizing of the dermis
- ✓ Nourish the skin and give it an instant glow
- ✓ Produced in France



Gifts of the ocean – algae and pearls in an alginate anti-age mask with a regenerating effect! This is a complete saturation of the skin with antioxidants, replenishment of its hydroreserve, instant moisturizing and toning. The mask helps to activate the regenerative functions of the skin cells and strengthen the basic structural elements of the dermis.

After applying the mask, the skin becomes amazingly smooth and shiny like the rarest pearl!

### 👉 USAGE:

Mix 90 ml of room temperature water with 30 g of powder to create a homogeneous mixture. Apply the mask with a spatula to the face area, moving along the massage lines. Leave the mask for 15 minutes. Remove it as one piece from bottom to top.

### 🔍 ACTIVE INGREDIENTS:

- Alginate
- 100% natural pearl powder

### ✓ USE:

- In complex care for mature skin
- To correct signs of dehydrated skin
- For instant shine effect on the skin

## POLYPEPTIDE ALGAE MASK

P131  
400 g

- ✓ Warm algae mask
- ✓ Powerful lifting and hydration effect
- ✓ Ideal consistency and plastification time
- ✓ Produced in France



Mineralizing and nourishing plasticizing mask is a perfect stimulator in the active phase of professional face skin care. Due to occlusion main active ingredients penetrate deep into skin and perform effectively. Plastification of the mask guarantees lifting effect and instant result.

Alginate mask with sturgeon roe extract nourishes skin with phospholipids restoring its lipidic barrier and improving skin cellular membrane structure. Mask alginates provide hydration, smoothness and rejuvenation. To create a homogenous mixture, mix 30g of powder with 90g of warm water (45° Celsius). This will provide comfort and pleasant warmth during the procedure.

After 20-30 minutes of application remove it as one piece.

### 👉 USAGE:

Mix 30g of powder and 90g of warm water (45oC). This will ensure comfort and pleasant warmth during the procedure. Stir very quickly, until a homogeneous mass is obtained. Use a trowel to apply the mask to the face, moving along the massage lines. After 15 minutes of exposure remove the mask from the face in one movement, from the bottom of the chin upwards to the forehead. Remove the rest of the mask with a damp sponge, tone it down.

### 🔍 ACTIVE INGREDIENTS:

- Alginate
- Black caviar extract

### ✓ USE:

- For dull face complexion
- For atonic, dehydrated skin
- For skin with vivid ageing signs
- After aggressive environmental influence



## 4-SYNERGY BRIGHTENING CREAM

AZELAIC ACID 10%

P111 – 100 ml  
H113 – 50 ml

- ✓ Correction of hyperpigmentation
- ✓ Regulation of sebaceous glands
- ✓ Mild keratolytic effect
- ✓ Light weightless texture
- ✓ Made in Israel

Synergistic action of 4 super powerful components to correct hyperpigmentation and post-acne. Light cream with azelaic acid contains a unique water-soluble form of 10% azelaic acid with glycine in the biologically active complex Potassium Azeloyl Diglycinate, which has an anti-inflammatory and brightening effect without irritating the skin.

The cream normalizes the work of the sebaceous glands thanks to the combination of azelaic and salicylic acids. The mild keratolytic effect of the cream improves the microrelief of the skin, promotes the renewal of keratinocytes. Hexylresorcinol potentiates the action of acids, blocking melanin synthesis and providing a lightening effect. Niacinamide and allantoin activate regeneration processes, improve microcirculation and antioxidant protection of cells.

### 👉 USAGE:

Apply to the face and neck area with light movements. Thanks to its light texture, the cream is perfectly absorbed, so it is ideal for oily skin. The azelaic acid cream is recommended for the complex treatment of acne and rosacea, for the correction of hyperpigmentation of various genesis. The cream is very economical to use, easily distributed, does not cause a burning sensation, and it is suitable even for sensitive skin.

### 🧪 ACTIVE INGREDIENTS:

- Potassium azeloyl diglycinate (10%)
- Niacinamide (4%)
- Hexylresorcinol (1%)
- Salicylic acid (2%)
- Allantoin

### 👉 USE:

- In complex treatment of acne, rosacea
- Hyperpigmentation of any genesis
- Pre- and post-peel care
- Correction of hyperkeratosis



## REVIT AHA CREAM

GLYCOLIC ACID 15%

P114 – 100 ml  
H115 – 50 ml

- ✓ Acceleration of regeneration, keratolytic effect
- ✓ Brightening effect, strengthening of the vascular wall
- ✓ Restructuring of the dermis, stimulation of the synthesis of structural elements
- ✓ Made in Switzerland

An effective combination of a high concentration of glycolic acid (15%) and a unique stabilized form of vitamin C in a cream with a dense texture. Thanks to this combination, glycolic acid actively stimulates the synthetic processes of fibroblasts, works with all skin cells, retains moisture in the epidermis, and improves the structure of the intercellular matrix of the skin. At the same time, Ascorbyl tetraisopalmitate – a fat-soluble stable form of vitamin C prevents photoaging of the skin, protects against “blue light” and free radicals. This form of vitamin C is the most effective for brightening the skin, helps maintain the elasticity of the vascular wall, catalyzes and accelerates chemical reactions, especially collagen synthesis.

The cream is ideal for restructuring, renewing skin cells, for evening out the tone and microrelief, increasing turgor of the skin.

### 👉 USAGE:

Apply to the face and neck area with light movements. The thick texture of the cream is easily absorbed, you may feel a slight tingling sensation during application (which quickly passes), but the cream does not cause irritation even on the most sensitive skin. For evening use. Works great with all Reneo Cosmetics serums, including the HPR-Serum.

### 🧪 ACTIVE INGREDIENTS:

- Glycolic acid (15%)
- Vitamin C – ascorbyl tetraisopalmitate
- Vitamin E (tocopherol)

### 👉 USE:

- Correction and prevention of age-related changes
- Signs of photoaging
- Uneven skin tone, signs of postacne
- Pre- and post-peel care

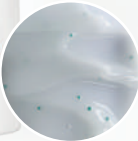


## CALMING LIGHT-CREAM

P190 – 200 ml

H191 – 50 ml

- ✓ Quickly soothes skin irritation of any type
- ✓ Invigorates blood vessels net
- ✓ Ultra light gel texture
- ✓ Teen skin care



This light cream for sensitive skin relieves irritations, restores skin barrier functions, decreasing its reactivity. The cream is effective in taking care of problem skin prone to inflammation. Palmitoyl tripeptide 8 in its composition supports optimal skin sensitivity, instantly soothes skin and promotes its regeneration. Bio-active extracts of red and brown algae hydrate the skin.

White ivy bark extract performs anti-inflammatory and anti-stress action. Unispheres of Vitamin E improve tissue immunity and anti-oxidant skin protection. It is an ideal cream for oily skin due to its light gel and easily absorbable texture. The cream can be used as a part of professional protocol as well as in everyday home care.

### USAGE:

Apply as a finishing touch to the face and neck area with light pompadour movements.

### ACTIVE INGREDIENTS:

- Palmitoyl tripeptide-8
- Ascophyllum extract (brown algae)
- Asparagopsis armata extract (red algae)
- White wild willow bark extract
- Vitamin E (tocopherol)

### USE:

- for sensitive skin prone to allergies
- for skin with high blood vessels penetration
- for problem skin with inflammations
- for dry and fragile skin under influence of irritants

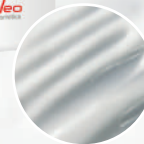


## LIPIDE BALANCING LIGHT CREAM

P221 – 100 ml

H222 – 50 ml

- ✓ Restoration of the skin lipid barrier
- ✓ Synthesis of endogenous ceramides
- ✓ Normalization of sebum fatty acids balance
- ✓ Calming anti-inflammatory effect
- ✓ Produced in Switzerland



LIPIDE BALANCING LIGHT CREAM perfectly restores the skin's lipid layer and normalizes the qualitative and quantitative composition of fatty acids on the surface of the epidermis. The cream has a soothing effect on the skin and reduces the appearance of inflammatory reactions.

The balanced composition of meadowfoam, jojoba oils and glycosphingolipids make up for the lack of fatty acids and form hydrophilic channels, helping to deliver the active ingredients to the deeper layers of the skin. Glycosphingolipids enhance the synthesis of ceramides while being a substrate for the restoration of cell membranes, which increases the protective properties of the skin and prevents moisture loss. Due to the active concentration of niacinamide, the synthesis of triglycerides in sebocytes is reduced, which helps to reduce inflammatory reactions. Zinc gluconate has a powerful anti-inflammatory effect, helps to reduce the synthesis of dihydrotestosterone, and also modulates the local immune response.

High-quality restoration of lipid balance, as well as an additional complex effect, makes this cream an ideal healing cream for oily skin! The cream has the lightest fluid texture and is completely non-comedogenic! Despite its oil-rich composition, the cream absorbs quickly and leaves no film or greasy feeling on the face.

### USAGE:

Apply to the face and neck area with light movements.

### ACTIVE INGREDIENTS:

- Glycosphingolipids
- Meadowfoam oil
- Zinc gluconate
- Vitamin B3 (niacinamide)
- Jojoba oil
- MMAllantoin

### USE:

- To restore the skin's protective properties
- For chronic dermatoses
- For oily skin
- For skin barrier restoration  
In the complex care of seborrhea and acne



## RENEW LIFTING CREAM

P194 – 100 ml

H195 – 50 ml

- ✓ Restructuring of extracellular matrix with targeted peptides
- ✓ Record 15% raise in elastin synthesis
- ✓ Influence on skin chromophores, evens skin tone
- ✓ Produced in Germany



## MATRIX EYE CREAM

P204 – 50 ml

H143 – 15 ml

- ✓ Complex action on the eye area
- ✓ Droopy upper eyelid lift
- ✓ Smoothing fine lines
- ✓ Tightening thin skin around the eyes
- ✓ Making dark circles around the eyes less vivid
- ✓ Produced in France

Peptide cream provides an intensive anti-age effect and magnificent results: guarantees skin tightening and skin lifting; improves skin turgor and elasticity, remodels a face contour and evens skin tone. The product is best suitable on mature skin since it acquires such deep reconstruction!

Elastin-stimulating peptide with high bioavailability activates fibroblasts and makes dermis tighter. Skin becomes more resistant to sagging with the help of this peptide. Natural ingredients and biotech complex CHROMOCARE balance melanocytes functions, strengthen vascular wall, improve skin tone and complexion. Macadamia oil provides nourishing care for mature skin.

This cream with velvet and rich texture leaves a feeling of fullness on skin immediately after application. The cream is used in professional care and in everyday home care.

### ✋ USAGE:

Apply as a finishing touch to the face and neck area with light pompadour movements.

Absolute best-seller in care for the eye area! Universal complex eye care cream protects delicate skin around the eyes and effectively eliminates signs of ageing: puffiness, wrinkles, droopy upper eyelids. This peptide cream provides a remodeling result by lifting, filling, strengthening the blood vessels walls, improving the dermis, strengthening the lipid barrier.

Biomimetic peptide stimulates structural dermis components. Biotechnological complex BEAUTIFEYE visually lifts droopy upper eyelids. Hyaluronic acid performs strong hydration and reduces fine lines. Plant oils with polyunsaturated oily acids have nutritive qualities, promote restoration and strengthen lipidic skin barrier. This cream with melting texture is quickly absorbed leaving no oily film on skin. It is recommended to be used at a final stage of professional care and in the course of home care twice a day.

### ✋ USAGE:

Apply to the orbital area daily morning/evening.

### 🧪 ACTIVE INGREDIENTS:

- Idealift
- Chromocare
- Hyaluronic acid
- Natural silk powder

### ✓ USE:

- In case of gravitational ptosis
- To improve face contour
- In case of turgor loss
- In case of signs of chrono-ageing
- In case of dehydrated and fragile skin

### 🧪 ACTIVE INGREDIENTS:

- Beautifeye
- Matrixyl®synthé6
- Shi wood oil
- Asai oil
- Hyaluronic acid

### ✓ USE:

- to care for skin with first signs of aging
- to care for droopy upper eyelid
- to care for sagging thin skin
- in anti-age procedures



## SUN-BLOCK EMULSION SPF 50

H218  
50 ml

- ✓ Broad spectrum UV protection
- ✓ Matting effect
- ✓ Moisture-retaining properties
- ✓ Ultra light fluid texture
- ✓ Made in France

Sunscreen reliably protects skin from the aggressive influence of UV rays due to the innovative combination of UVA and UVB wide spectrum filters.

A high concentration of the biotechnological active ingredient – Matmarine (3%), reduces the functioning of the sebaceous glands, and makes the skin matte. The cream at the same time maintains the hydrobalance in the tissues, prevents transepidermal moisture loss. Glycerin (1%) restores the overall moisture level of the epidermis.

It has a light fluid texture, the cream is instantly absorbed, leaving no feeling of greasy on the skin and shine, creates a matting effect.

### 👉 USAGE:

Recommended for use after aggressive techniques in the salon at the end of procedures, as well as in home care during periods of increased sun exposure.

### 🧪 ACTIVE INGREDIENTS:

- UVA, UVB filters
- Matmarine
- Glycerin

### ✔ USE:

- for everyday care on sunny days
- during course of aggressive procedures
- after injections
- while staying on seaside or in mountains



## CREAM-PROTECTOR SPF30

H210  
50 ml

- ✓ Triple protection
- ✓ Latest generation photostable UVB and UVA filters
- ✓ Can be used even after the most aggressive treatments
- ✓ Suitable for sensitive skin
- ✓ Produced in Germany

Powerful protection of skin cells during periods of increased sun activity. The triple protection system provides physical, chemical, and biological effects: UV rays are reflected or blocked and transformed into energy, while protective, regenerative, and immune processes are stimulated in the skin. The perfectly selected photostable composition of filters protects against the entire spectrum of UVB and UVA rays. The cream is recommended even after the most aggressive aesthetic treatments: its action is purely protective and its formula contains no active ingredients, making it absolutely safe and essential for daily use. Easily spreadable texture ensures even application of the cream. Now the skin of the face is protected, moisturized, and feels comfortable on the hottest day!

### 👉 USAGE:

Apply to the face and neck area with light movements.

Use for all skin types during the sunny season and in places of high sun aggression.

### 🧪 ACTIVE INGREDIENTS:

- Ronacare ectoin
- UVA, UVB filters

### ✔ USE:

- for everyday care on sunny days
- during course of aggressive procedures
- after injections
- while staying on seaside or in mountains

**BB-CREAM EXTRA LIGHT**

H217

30 ml



- ✓ "smart" pigment adapting to every skin tone
- ✓ ultralight texture
- ✓ natural UV-filters
- ✓ all-in-one: care, camouflage, protection, makeup base
- ✓ produced in Germany

Camouflage and care in one bottle! BB-cream with a light texture adapts to every skin tone. It spreads ideally and covers all skin imperfections. It also hydrates and nourishes skin, protects it from UV-rays, performs antioxidant and anti-inflammatory actions. The product does not spread and may be used as a light foundation.

Titanium dioxide performs physical UV protection in urban environments. Tocopherol blocks free radicals. Vitamin B5 soothes and stimulates skin tissue restoration. Sweet almond and grape seeds oils provide nutrition and hydration of skin. This product is ideal for everyday makeup. It is not comedogenic.

## USAGE:

The cream is recommended for daily morning use for all skin types. It can be used as a base for make-up.

**SILVERY MASSAGE GEL**

P102

50 ml

- ✓ Restoring the skin's lipid barrier
- ✓ Maintaining the skin's natural moisturizing factor
- ✓ Long glide for any massage technique
- ✓ Produced in France

Silvery massage gel with a light floral aroma provides long-lasting glide up to 40 minutes for any massage technique. The gel helps to restore lipid mantle, saturates the skin with antioxidants, has a stimulating and toning effect on the skin. Provides long-lasting hydration and supports the skin's local protective reaction.

The gel is absolutely non-comedogenic, very comfortable for the client and economical in use.

## USAGE:

Massage the face, neck and décolleté zone. After application, rinse off with warm water and tone the skin.

## ACTIVE INGREDIENTS:

- Grape seed oil
- Sweet almond oil
- Vitamin B5 (pantenol)
- Vitamin E (tocopherol)
- Titanium dioxide

## USE:

- as skin imperfections camouflage
- for skin tone smoothing
- as everyday UV-protection
- as a foundation for makeup

## ACTIVE INGREDIENTS:

- Coconut oil (capril triglyceride)
- Natural glycerin
- Sucrose
- Cumarine

## USE:

- For any massage technique
- In procedure protocols
- In home care (using rollers and gouache)



## ULTRA-NORM CLEANSING GEL

P171  
200 ml

- ✓ Deep skin cleansing without over drying effect
- ✓ Anti-inflammatory and binding effect
- ✓ Skin hydration and softening
- ✓ Produced in Germany



Face washing gel easily removes excessive skin sebum and impurities and does not dry out the skin. This gel for combination and oily skin perfectly unclogs pores, soothes and softens the skin, and performs anti-oxidant action.

Cleansing gel contains the following natural components: Aloe Vera and linden flowers extract that have antiseptic, moisturising and anti-oxidant qualities. This product is suitable for every skin type due to its ingredients and as it has no acids in it.

The gel has a light texture and is perfect for applying on skin and for rinsing with water.

### 👉 USAGE:

Apply to the face and neck area with light massaging movements. Rinse thoroughly with water.

### 🧪 ACTIVE INGREDIENTS:

- Ricinus communis seed oil
- Aloe vera
- Linden flower extract

### ✓ USE:

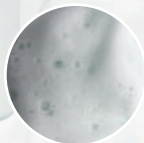
- for everyday care of skin prone to oiliness
- for problem skin with signs of acne
- for normal and combination skin during spring-summer period



## COMFORT CLEANSING MOUSSE

P172  
150 ml

- ✓ Hydrates and prevents loss of moisture
- ✓ Remove smake up perfectly
- ✓ Does not overdry skin
- ✓ Produced in Germany



This gentle and airy mousse excellently purifies the skin. It leaves no sensation of dryness or tightness. It is easy to rinse off.

This is a perfect cleanser for all skin types, including sensitive skin. Already at the stage of cleansing, mousse actively cares for skin, providing hydration, soothing and restoring its freshness.

Cleansing foam contains hyaluronic acid for support of a natural skin moisturising factor and hydration. Betaine promotes moisture retention in skin cells, softens and soothes the skin.

Apply this mousse on wet skin with light massage movements. Rinse with water. Use it twice a day in home care to clean face and neck skin. Finish the purification procedure with a toner.

### 👉 USAGE:

Apply the mousse on wet skin with light massage movements. Rinse with water. Use it twice a day in home care to clean face and neck skin. Finish the purification procedure with a toner.

### 🧪 ACTIVE INGREDIENTS:

- Betaine
- Hyaluronic acid

### ✓ USE:

- for daily cleansing of all skin types
- for make up removal
- to care for dry, dehydrated skin





## CALMING MILK

P173  
200 ml

- ✓ Gentle cleansing for the most sensitive skin
- ✓ Removes make-up perfectly
- ✓ Soothing anti-inflammatory effect
- ✓ Produced in France

Light emulsion for gentle cleansing of the skin from impurities and make-up removal. Maintains the natural balance of the skin, preserving its moisture and the integrity of the lipid layer.

Contains white lily bulb extract, which provides an antiseptic effect, soothes reactive skin, moisturizes and softens it. Glycerin restores the overall moisture level of the epidermis. Osmoprotector – betaine regulates the concentration and balance of salts in skin cells, retains water molecules in them and strengthens cell walls, keeping moisture inside the cell.

### 👉 USAGE:

Apply to the face and neck area with a cotton pad to cleanse the skin and remove make-up.



## CALMING TONIC

P174  
200 ml

- ✓ Sensitive skin lotion for skin prone to irritations
- ✓ Moisturizing and softening
- ✓ pH level restoration

Toner for sensitive skin moisturizes and soothes the skin. Eases skin tightness and softens epidermis. The product perfectly tonifies the skin, restoring its pH level. It has antioxidant and anti-inflammatory properties. This toner with a light aroma and texture leaves no sticky film on skin.

Everyday use of calming toner significantly decreases skin sensitivity due to activity of phyto components. Laminaria, ginseng, calendula extracts and allantoin perform a long-lasting hydration, anti-inflammatory action and tissue restoration.

### 👉 USAGE:

Apply to the face and neck area with a cotton pad after washing and removing make-up.

### 🧪 ACTIVE INGREDIENTS:

- White lily bulb extract
- Glycerin
- Betaine

### ✓ USE:

- In care for thinned, dry skin
- In anti-aging treatments
- In care for skin prone to irritation
- In case of couperose

### 🧪 ACTIVE INGREDIENTS:

- Extract of ginseng
- Calendula extract
- Laminaria extract
- Allantoin

### ✓ USE:

- for fragile, dry and dehydrated skin
- as a part of anti-age procedures
- for atopic skin prone to irritations
- for skin with rosacea
- for face cleansing during the day



## ULTRA-NORM REFRESHING TONIC

P175  
200 ml

- ✓ Seboregulation
- ✓ Pores contraction
- ✓ Anti-inflammatory and calming action
- ✓ Produced in France



Refreshing toner for oily skin is rich in active ingredients and has a sebum regulating action. The product perfectly tightens pores and normalizes skin sebum production. It produces a light exfoliating effect and smoothes skin relief. The toner stimulates skin natural bactericidal protection mechanisms and decreases inflammation, keeping the skin well hydrated. The toner's light aroma leaves a fresh sensation on skin.

Zinc PCA and salicylic acid regulate sebaceous glands activity and perform light keratolytic action. Lime extract with its antibacterial and anti-inflammatory properties performs antioxidant skin protection. Aloe Vera perfectly hydrates and soothes skin.

### 👉 USAGE:

Apply to the face and neck area with a cotton pad after washing and removing make-up.

### 🧪 ACTIVE INGREDIENTS:

- Aloe vera
- Zinc PCA
- Vitamin B5 (pantenol)
- Vitamin E (tocopherol)
- Salicylic acid

### ✓ USE:

- for everyday care for skin prone to oiliness
- for a problem skin care, for acne prevention
- for a combination skin care during spring-summer period



## PRE-PEEL LOTION

M303  
200 ml

- ✓ Decreases skin acidity level efficiently
- ✓ Degreases skin before a peel procedure
- ✓ Prepares skin for a course of peelings
- ✓ Prevents skin from developing inflammations
- ✓ Produced in Israel



Pre-peeling degreasing lotion is a must-have product in every chemical peel procedure for all skin types including sensitive skin. It works as a degreaser dissolving lipids on skin surface before an application of a chemical solution that potentiates deep penetration of acids. It perfectly prepares skin for following active influence: degreasing skin, acidifying the pH environment of skin, preventing inflammatory reaction from progressing, performing keratolytic action to smoothen skin.

Thanks to AHA and BHA acids – glycolic(5%), lactic(2%), salicylic(1%), phytic (1%), citric; and due to plant and fruit extracts it decreases inflammation, provides antiseptic and bactericidal action, and performs as mild keratolytic.

This lotion is used to cleanse skin before peeling as well as at home for complex problem skincare in the evening.

### 👉 USAGE:

In the peel procedure: After cleansing the skin (with P171 Ultra-Norm Cleansing Gel or P172 Comfort Cleansing Mousse), degrease the skin and lower the pH for deeper and more even acid penetration with Pre-peeling Degreasing Lotion.

In home care: As a pre-peeling preparation for 14 days prior to the procedure, use the lotion in the evening. In the complex care for problem skin, apply a course of up to 1 month daily in the evening.

### 🧪 ACTIVE INGREDIENTS:

- Glycolic acid
- Lactic acid
- Salicylic acid
- Phytic acid

### ✓ USE:

- in every peel procedure
- to dry up oily skin with acne
- as a complex supporting course in a home care between peel procedures



## SOFT-PEELING ENZYME MASK

P200 – 200 ml

H104 – 100 ml

- ✓ Enzyme peeling
- ✓ Soft exfoliant for sensitive skin
- ✓ Refines skin microrelief, instant whitening effect
- ✓ 3 ways of use: as a mask, exfoliant or gommage
- ✓ Produced in Switzerland



## DEEP CLEANSING JELLY-MASK

P100 - 200 ml

- ✓ Unclogs pores quickly
- ✓ Exposure time is only 10 minutes
- ✓ Suitable for sensitive skin with couperose
- ✓ Produced in Israel

Enzyme cream-mask with double action: enzymatic and mechanical. This peeling with a soft creamy texture is suitable for sensitive skin. It gently disconnects horny scales and promotes mild exfoliation of dead skin cells. It smoothes microrelief and gives an instant brightening effect.

Papaya extract and corn starch guarantee deep purification and increase effectiveness of all products applied afterwards. Small abrasive is presented by ideally rounded polymethylene microspheres.

There are 3 ways to use this product: as a mask, exfoliant or gommage. Use as a mask for sensitive skin: apply for 10 minutes and rinse with warm water. To intensify its action it is recommended to use as an exfoliant or gommage: apply a thin layer on face, let it dry and peel off following massage lines.

### 👉 USAGE:

There are 3 ways to use this product: as a mask, exfoliant or gommage. Use as a mask for sensitive skin: apply for 10 minutes and rinse with warm water. To intensify its action it is recommended to use as an exfoliant or gommage: apply a thin layer on face, let it dry and peel off following massage lines.

### 🧪 ACTIVE INGREDIENTS:

- Papaya extract
- Hydrolyzed corn starch
- Exfoliating granules

### 👉 USE:

- in all protocols to intensify action of products applied afterwards (as the second step)
- for leveling skin texture and complexion
- as elimination of keratosis manifestations
- before injections of any types

### 👉 USAGE:

Spread the mask evenly over the face. Apply the mask for 10 minutes under a film. Afterwards remove the film in segments and the rest of the mask with a dry sponge. In the open area you can perform mechanical or machine cleaning.

### 🧪 ACTIVE INGREDIENTS:

- Aloe vera
- Urea
- Alpha bisabolol
- Green tea extract
- Calendula extract

### 👉 USE:

- in deep skin cleansing protocols
- as a preparation for any combination skin course
- in case of comedones

## BRIGHTENING REGENERATING SKIN CARE FOR CORRECTION OF PIGMENTATION OF VARIOUS ORIGINS

All-encompassing skin care to even out skin tone, control melanogenesis and prevent the appearance of new spots. It helps strengthen the skin barrier and create a favorable environment for "healthy" keratinocytes.

### ✓ Indications:

- Uneven skin texture and tone
- Pigmentation of various origins (including post-acne)
- Signs of dehydration
- Hyperkeratosis

Mandatory step  
 Additional step

1	<b>CLEANSING</b> Clean the face and neck area with <b>P172</b> Comfort Cleansing Mousse , and then with <b>P174</b> Calming Tonic.
2	<b>EXFOLIATION</b> Apply <b>P200</b> Soft-Peeling Enzyme Mask in a dense layer to the face and neck area. Leave it for 5-7 minutes. Rinse thoroughly with water. Tonify the skin.
3	<b>MASSAGE</b> Massage using <b>P102</b> Silvery Massage Gel. The texture of the oil allows a massage to last up to 40 minutes. Remove the remains with a wet napkin. Tonify the skin.
4	<b>BIOMIMETIC SERUM</b> Apply <b>P116</b> BRIGHTEN ING ALPAFLOR SERUM to the face and neck area. Leave it for 2-3 minutes until completely absorbed.
5	<b>ACTIVE MASK</b> Apply <b>P189</b> Soft Balance Clay Mask in a dense layer to the face and neck area. Leave it for 15-20 minutes. Rinse off with warm water. Tonify the skin.
6	<b>SERUM WITH TARGETED ACTION</b> Apply <b>P223</b> HPR-SERUM or <b>P107</b> RENEWING ENZYM AHA SERUM to the face and neck area. Leave it for 2-3 minutes until completely absorbed.
7	<b>EYE CARE</b> Apply <b>P204</b> Matrix Eye Cream to the eye area.
8	<b>FINISH CREAM</b> Apply <b>P111</b> 4-SYNERGY BRIGHTENING CREAM or <b>P114</b> REVIT AHA CREAM gently to the face and neck area.

⌚ Duration of 8-step procedure: 1 hour

## LIFTING ANTI-AGE CARE

The most popular anti-age lifting treatment today! Effective stimulation of the dermis and its components, as well as activation and maintenance of all regenerative processes in the skin.

### ✓ Indications:

- Strongly marked tissues ptosis
- Swelling
- Skin sagging

Mandatory step  
 Additional step

1	<b>CLEANSING</b> Clean the face and neck area with <b>P172</b> Comfort Cleansing Mousse , and then with <b>P174</b> Calming Tonic.
2	<b>EXFOLIATION</b> Apply <b>P200</b> Soft-Peeling Enzyme Mask in a dense layer to the face and neck area. Leave it for 5-7 minutes. Rinse thoroughly with water. Tonify the skin.
3	<b>MASSAGE</b> Massage using <b>P102</b> Silvery Massage Gel. The texture of the oil allows a massage to last up to 40 minutes. Remove the remains with a wet napkin. Tonify the skin.
4	<b>BIOMIMETIC SERUM</b> Apply <b>P185</b> 3D-Lift Serum to the face and neck area. Leave it for 2-3 minutes until completely absorbed.
5	<b>ACTIVE MASK</b> Prepare <b>P131</b> Polypeptide Algae Mask : mix 30 g of powder and 90 ml of warm water (45°C) to create a homogeneous mixture. You can vectorize the mask polymerization and intensify lifting with gauze bandage. Apply the mask with a spatula to the face area, if needed you can also cover eye and mouth areas. Leave the mask for 20-30 minutes. Remove it as one piece. Then remove the remains of the mask with a wet napkin. Tonify the skin.
<b>BIOMIMETIC SERUM WITH TARGETED ACTION</b>	
Apply one of the biomimetic serums or conductive serums to the face according to the problem. Leave for 2-3 minutes until completely absorbed. Choose one of the biomimetic serums as indicated:	
6	for regeneration – <b>P223</b> HPR Serum for reducing the skin pigmentation – <b>P116</b> BRIGHTENING ALPAFLOR SERUM
6	for normalization of seboeregulation – <b>P176</b> Total Oil-Control Serum for reducing the skin reactivity – <b>P178</b> Anti-Red Calming Serum for tonus and lifting – <b>P185</b> 3D-Lift Serum for moisturizing and filling wrinkles – <b>P117</b> Anti-Wrinkle Serum for nutrition and vitaminization – <b>P219</b> Vita-Active Peptide Serum or one of the conductive serums: for lifting – <b>M126</b> Conductive Lift-Booster for reducing the reactivity of sensitive skin – <b>M128</b> Conductive Calm-Booster for moisturizing – <b>M127</b> Conductive Aqua-Booster
7	<b>EYE CARE</b> Apply <b>P204</b> Matrix Eye Cream to the eye area.
8	<b>FINISH CREAM</b> Apply <b>P194</b> Renew Lifting Cream gently to the face and neck area.

⌚ Duration of 8-step procedure: 1 hour

## NOURISHING CARE WITH A CORNEOTHERAPY EFFECT

This comprehensive care restores the skin's lipid barrier, prevents moisture loss, vitaminizes the skin and fills it with essential polyunsaturated fatty acids.

### ✓ Indications:

- Thinning skin
- Loss of tone
- Dry skin

Mandatory step  
 Additional step

1	<b>CLEANSING</b> Clean the face and neck area with <b>P172</b> Comfort Cleansing Mousse , and then with <b>P174</b> Calming Tonic.
2	<b>EXFOLIATION</b> Apply <b>P200</b> Soft-Peeling Enzyme Mask in a dense layer to the face and neck area. Leave it for 5-7 minutes. Rinse thoroughly with water. Tonify the skin.
3	<b>MASSAGE</b> Massage using <b>P102</b> Silvery Massage Gel. The texture of the oil allows a massage to last up to 40 minutes. Remove the remains with a wet napkin. Tonify the skin.
4	<b>BIOMIMETIC SERUM</b> Spread <b>P219</b> Vita-Active Peptide Serum gently over the face and neck area. Leave it for 2-3 minutes until completely absorbed.
5	<b>ACTIVE MASK</b> Apply <b>P189</b> Soft Balance Clay Mask in a dense layer to the face and neck area. Leave it for 15-20 minutes. Rinse off with warm water. Tonify the skin.
6	<b>BIOMIMETIC SERUM WITH TARGETED ACTION</b> Apply one of the biomimetic serums or conductive serums to the face according to the problem. Leave for 2-3 minutes until completely absorbed. Choose one of the biomimetic serums as indicated: for regeneration – <b>P223</b> HPR Serum for reducing the skin pigmentation – <b>P116</b> BRIGHTENING ALPAFLOR SERUM for normalization of seboeregulation – <b>P176</b> Total Oil-Control Serum for reducing the skin reactivity – <b>P178</b> Anti-Red Calming Serum for tonus and lifting – <b>P185</b> 3D-Lift Serum for moisturizing and filling wrinkles – <b>P117</b> Anti-Wrinkle Serum for nutrition and vitaminization – <b>P219</b> Vita-Active Peptide Serum or one of the conductive serums: for lifting – <b>M126</b> Conductive Lift-Booster for reducing the reactivity of sensitive skin – <b>M128</b> Conductive Calm-Booster for moisturizing – <b>M127</b> Conductive Aqua-Booster
7	<b>EYE CARE</b> Apply <b>P204</b> Matrix Eye Cream to the eye area.
8	<b>FINISH CREAM</b> Apply <b>P194</b> Renew Lifting Cream gently to the face and neck area.

⌚ Duration of 8-step procedure: 1 hour

## MOISTURIZING BIOREVITALIZING CARE WITH A MIO RELAX EFFECT

This care provides intensive skin hydration, smoothes wrinkles, promotes natural skin hydro-reserve ability, protection and comfort.

### ✓ Indications:

- Skin dehydration
- First signs of aging
- Fine lines and wrinkles

Mandatory step  
 Additional step

1	<b>CLEANSING</b> Clean the face and neck area with <b>P172</b> Comfort Cleansing Mousse , and then with <b>P174</b> Calming Tonic.
2	<b>EXFOLIATION</b> Apply <b>P200</b> Soft-Peeling Enzyme Mask in a dense layer to the face and neck area. Leave it for 5-7 minutes. Rinse thoroughly with water. Tonify the skin.
3	<b>MASSAGE</b> Massage using <b>P102</b> Silvery Massage Gel. The texture of the oil allows a massage to last up to 40 minutes. Remove the remains with a wet napkin. Tonify the skin.
4	<b>BIOMIMETIC SERUM</b> Spread <b>P117</b> Anti-Wrinkle Serum gently over the face and neck area. Leave it for 2-3 minutes until completely absorbed.
5	<b>ACTIVE MASK</b> Prepare <b>P208</b> Anti-wrinkle mask: mix 30 g of powder and 90 ml of water to create a homogeneous mixture. Apply the mask with a spatula to the whole face area (including eye area) and leave the mask for 20 minutes. Remove it as one piece. Tonify the skin.
6	<b>BIOMIMETIC SERUM WITH TARGETED ACTION</b> Apply one of the biomimetic serums or conductive serums to the face according to the problem. Leave for 2-3 minutes until completely absorbed. Choose one of the biomimetic serums as indicated: for regeneration – <b>P223</b> HPR Serum for reducing the skin pigmentation – <b>P116</b> BRIGHTENING ALPAFLOR SERUM for normalization of seboeregulation – <b>P176</b> Total Oil-Control Serum for reducing the skin reactivity – <b>P178</b> Anti-Red Calming Serum for tonus and lifting – <b>P185</b> 3D-Lift Serum for moisturizing and filling wrinkles – <b>P117</b> Anti-Wrinkle Serum for nutrition and vitaminization – <b>P219</b> Vita-Active Peptide Serum or one of the conductive serums: for lifting – <b>M126</b> Conductive Lift-Booster for reducing the reactivity of sensitive skin – <b>M128</b> Conductive Calm-Booster for moisturizing – <b>M127</b> Conductive Aqua-Booster
7	<b>EYE CARE</b> Apply <b>P204</b> Matrix Eye Cream to the eye area.
8	<b>FINISH CREAM</b> Apply <b>P190</b> Calming Light Cream gently to the face and neck area.

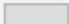
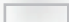
⌚ Duration of 8-step procedure: 1 hour

## SEBOREGULATION CARE FOR OILY SKIN

Complex care (includes comedones extraction) that restores skin sebum balance and eliminates external manifestation of sebaceous glands hypersecretion (oily shine, enlarged pores, hyperkeratosis).

### ✓ Indications:

- Increased sebum activity
- Numerous comedones
- Inflammatory elements
- Oily shine
- Enlarged pores
- Hyperkeratosis

 Mandatory step  
 Additional step

1	<b>CLEANSING</b> Clean face and neck area with <b>P171</b> Ultra-Norm Cleansing Gel, and then with <b>P175</b> Ultra-Norm Refreshing Tonic.
2	<b>EXFOLIATION</b> Apply <b>P200</b> Soft-Peeling Enzyme Mask in a dense layer to the face and neck area. Leave it for 5-7 minutes. Rinse thoroughly with water. Tonicify the skin.
3	<b>DEEP PORE CLEANSING</b> Apply <b>P100</b> Deep Cleansing Jelly-Mask under a film and leave for 10 minutes. Afterwards remove the film in segments and the rest of the mask with a dry sponge. Deep pore cleansing can be made mechanically or with a special equipment.
4	<b>SERUM</b> Apply <b>P176</b> Total Oil-Control Serum gently to the face and neck area. Leave it for 2-3 minutes until completely absorbed. On the inflammatory elements apply <b>P213</b> Local SOS-Solution. The effect can be intensified by using of darsonval.
5	<b>ACTIVE MASK</b> Apply <b>P212</b> Sebo-Norm Mask in a dense layer. Leave it for 10-15 minutes. Remove the remains of the mask with a wet napkin. Tonicify the skin.
6	<b>BIOMIMETIC SERUM WITH TARGETED ACTION</b> Apply one of the biomimetic serums or conductive serums to the face according to the problem. Leave for 2-3 minutes until completely absorbed. Choose one of the biomimetic serums as indicated: for regeneration – <b>P223</b> HPR Serum for reducing the skin pigmentation – <b>P116</b> BRIGHTENING ALPAFLOR SERUM for normalization of sebo-regulation – <b>P176</b> Total Oil-Control Serum for reducing the skin reactivity – <b>P178</b> Anti-Red Calming Serum for tonus and lifting – <b>P185</b> 3D-Lift Serum for moisturizing and filling wrinkles – <b>P117</b> Anti-Wrinkle Serum for nutrition and vitaminization – <b>P219</b> Vita-Active Peptide Serum or one of the conductive serums: for lifting – <b>M126</b> Conductive Lift-Booster for reducing the reactivity of sensitive skin – <b>M128</b> Conductive Calm-Booster for moisturizing – <b>M127</b> Conductive Aqua-Booster
7	<b>EYE CARE</b> Apply <b>P204</b> Matrix Eye Cream to the eye area.
8	<b>FINISH CREAM</b> Apply <b>P221</b> Lipid Balance Light Cream gently to the face and neck area.

⌚ Duration of 8-step procedure: 1 hour 40 minutes.

## ENZYME PEELING: EXPRESS CARE

Quick and gentle regeneration of even the most sensitive skin! Gentle exfoliation of the stratum corneum, regeneration, and revitalization of the skin. The care provides the immediate result and has a prolonged effect.

### ✓ Indications:

- Pre-peeling preparation
- Post-peeling care
- The first signs of aging
- Skin atony
- Dull skin complexion Hyperkeratosis

1	<b>CLEANSING</b> Clean face and neck area with <b>P171</b> Ultra-Norm Cleansing Gel, and then with <b>P175</b> Ultra-Norm Refreshing Tonic.
2	<b>EXFOLIATION</b> Apply <b>P200</b> Soft-Peeling Enzyme Mask in a dense layer to the face and neck area. Leave it for 5-7 minutes. To intensify the effect, cover the mask with a film and then cover with a warm wet towel or napkin. After the exposure, emulsify the mask with light massage movements and rinse thoroughly with water. Tonicify the skin.
3	<b>SERUM</b> Apply <b>P107</b> RENEWING ENZYME AHA SERUM to the face and neck area. Leave it for 2-3 minutes until completely absorbed.
4	<b>ACTIVE MASK</b> Apply <b>P135</b> HYDRA-HELP MASK in a thick layer to the face and neck area. Exposure time is 10 minutes. Do not wash off the mask, remove the remains with a dry napkin. Finish cream is optional.

⌚ Duration of 8-step procedure: 25 minutes.

## RELAXING BLUEBERRY MASSAGE GEL

P152  
300 g

- ✓ A holistic approach to aesthetic problems of the body
- ✓ Activation of the most important metabolic processes
- ✓ Excellent gliding properties, suitable for all types of massage techniques
- ✓ Made in France



The jelly massage gel with a delightful blueberry aroma turns into a delicate melting milk on the skin, providing a long-lasting slide, moisturizing, toning and anti-edema effect. The massage product has powerful antioxidant properties. The mechanical effect of the massage is complemented by a pleasant aroma. Relaxation is achieved by the impact on the senses through: tactile sensations, fragrance and color.

### USAGE:

Apply the gel to dry skin and massage. The duration of the massage depends on the chosen technique.

At the end of the procedure turn the gel into a milk using a water spray. Distribute the milk evenly with light movements until it is completely absorbed or remove the residue with a towel or napkin.

### ACTIVE INGREDIENTS:

- Glycerin
- Blueberry (flavoring)

### USE:

- In case of flabby skin, loss of tone
- In case of excessive fatty deposits
- In case of psychosomatic imbalance





## THERMO-ACTIVE SLIM GEL

P319 - 300 ml  
H320 - 100 ml

- ✓ Heating effect
- ✓ Very light texture
- ✓ Complex anti-oedematic, lipolytic and firming action
- ✓ Made in France

Thermoactive gel has a very light texture, reduces cellulite and is quickly absorbed without leaving stickiness. Highly active components: extracts of guarana and kelp and field horsetail guarantee this effect. This gel for figure correction provides a local increase of tissue temperature, which directly affects the metabolism of the cells. Also it stimulates the microcirculatory channel, providing a powerful lipolytic and lymphatic drainage effect on problem areas. It is an excellent product to lose weight, reduce the volume and get rid of the effect of "orange peel".

### USAGE:

Locally apply the gel under a film for 7-10 minutes until the skin is actively warmed up. Then you can massage using massage products



## COOLING TONING GEL

P326  
100 ml

- ✓ Anti-cellulite effect
- ✓ Vasodilating and anti-edematous
- ✓ Soothe and moisturize the skin
- ✓ Made in Italy

Cooling gel quickly relieves fatigue, leaving a feeling of freshness and coolness. Due to vegetable oils it contains, it has a softening and nourishing effect and maintains the level of hydration in the skin. This anti-edematous, refreshing feet gel contains vascular strengthening components, improves the circulation of fluids and nutrients, thus reducing swelling and fatigue of tissues. A powerful synergy of antioxidants protects skin cells. The gel has a very light texture and is instantly absorbed.

### USAGE:

Apply the gel with gentle massage movements in a thin layer to the skin of problematic zones.

### ACTIVE INGREDIENTS:

- Laminaria extract
- Guarana
- Field horsetail extract

### USE:

- In case of any stage of cellulite
- In case of excessive fatty deposits
- In care for flabby skin
- In complex body correction programs

### ACTIVE INGREDIENTS:

- Centella asiatica
- Fir extract
- Spikenard extract
- Mentol

### USE:

- In care for dry skin
- In care for swollen feet
- In case of feeling of fatigue